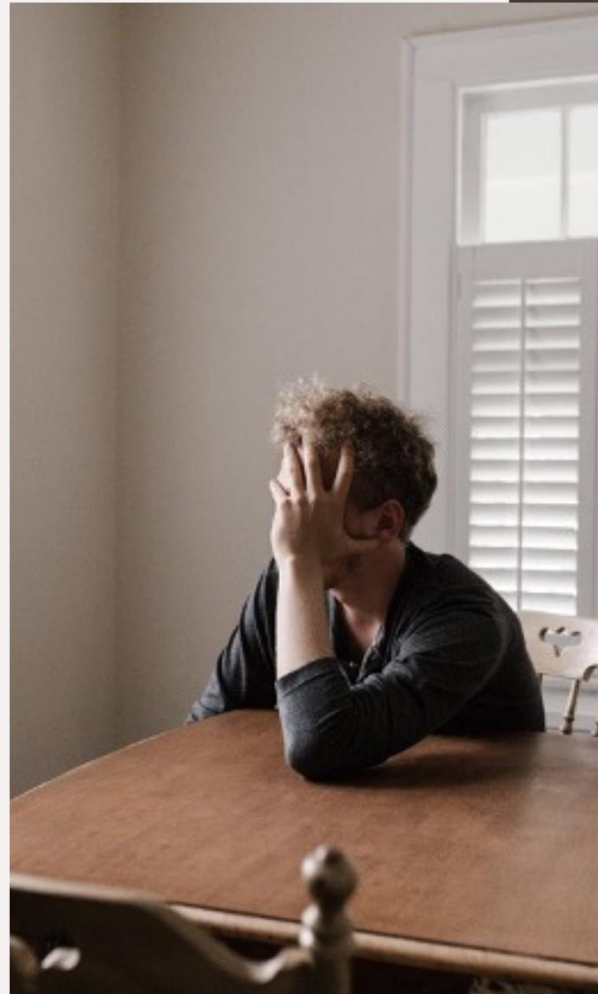


# Participants Needed!

## Qualitative exploration of individuals living with a person diagnosed with depression

My name is Blaze Kidron-Style. I am a BSc Psychology student at Regent's University, London.

For my dissertation I am conducting a qualitative study to investigate the lived experience of individuals living with a person with diagnosed depression.



The study is being supervised by Kerem Soylemez, who can be reached at [kerem-kemal.soylemez@regents.ac.uk](mailto:kerem-kemal.soylemez@regents.ac.uk)

The study has been approved by the Psychology Research Ethics Committee at Regent's University London (reference: 962)

The inclusion criteria to take part in the research:

- At least 18 years old
- Currently live with a person with diagnosed depression
- Not be currently diagnosed with a mental health condition

If you fit the inclusion criteria above and would like to take part in an online interview around 45 to 60 minutes, please get in touch with me at [S21003057@regents.ac.uk](mailto:S21003057@regents.ac.uk)

**Thank You!**